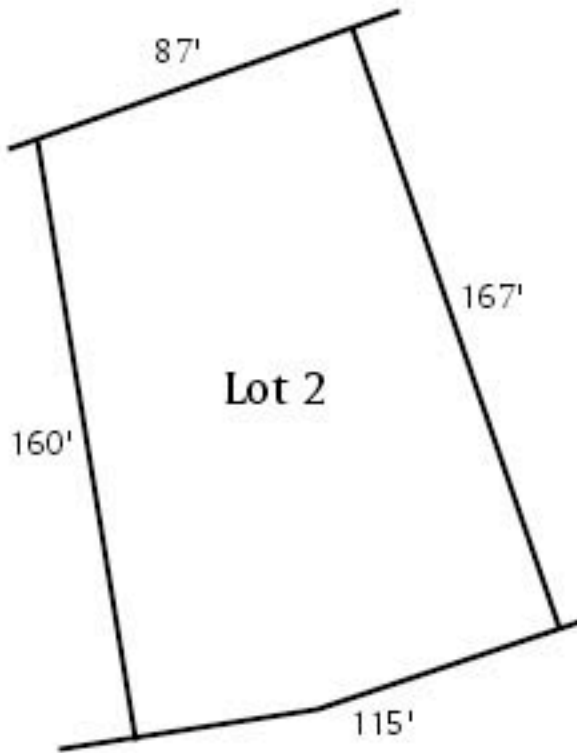


# WHITEHILLS LAKES & WOODS



## Whitehills Lakes South

**Lot #: 2**

**Price: \$135,900**

**School System:**

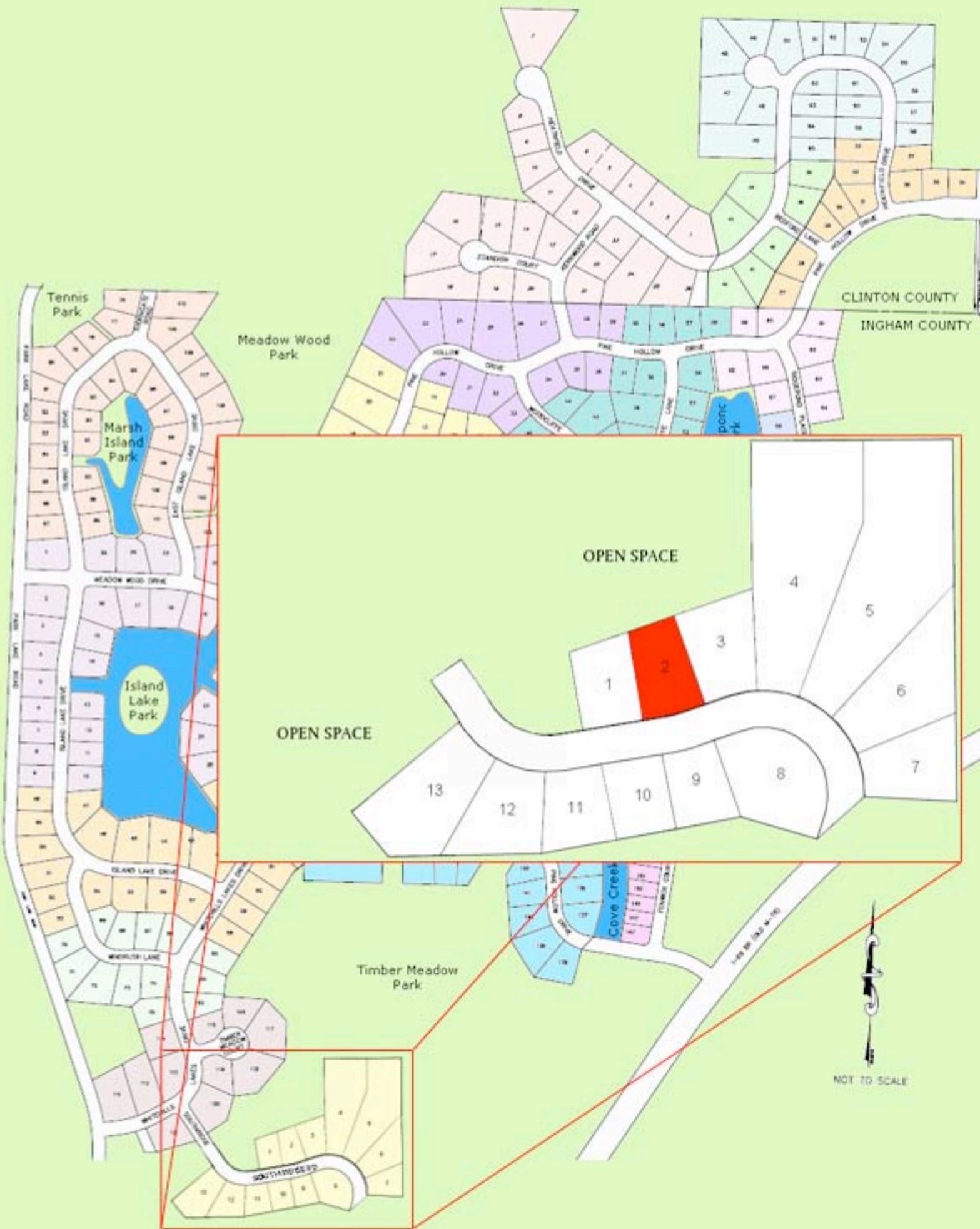
E. Lansing

**Description:**

Walkout onto wetland park. Some fill on front of lot.

*This map is for sales purposes only. Actual plat information shall be obtained from the recorded plat at the county register of deeds.*

*The placement of all material within the Wetlands edge is prohibited without specific site development approval by the Department of Natural Resources, Land Resources Programs Division, Wetlands Protection Unit.*



CLINTON COUNTY  
INGHAM COUNTY

OPEN SPACE

OPEN SPACE

NOT TO SCALE