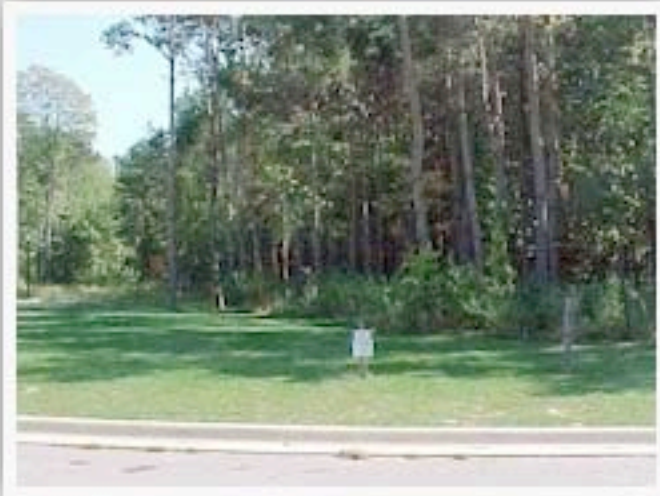
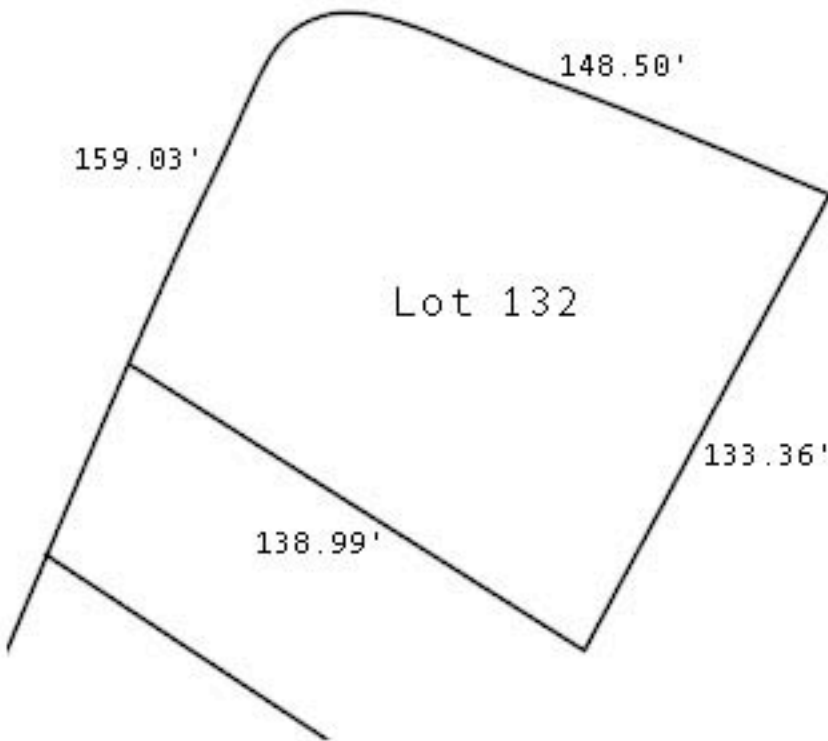


WHITEHILLS LAKES & WOODS



Whitehills Lakes #6

Lot #: 132

Price: \$140,000

School System:

Haslett

Description:

Wooded daylight with creek access; Contact

Jim @ Giguere Homes
204-0818 or

jim@giguerehomes.com

This lot is scheduled for a spec house by Jim

Giguere Bldrs. For info
contact 349-7777

This map is for sales purposes only. Actual plat information shall be obtained from the recorded plat at the county register of deeds.

The placement of all material within the Wetlands edge is prohibited without specific site development approval by the Department of Natural Resources, Land Resources Programs Division, Wetlands Protection Unit.

Prices and availability subject to change.

